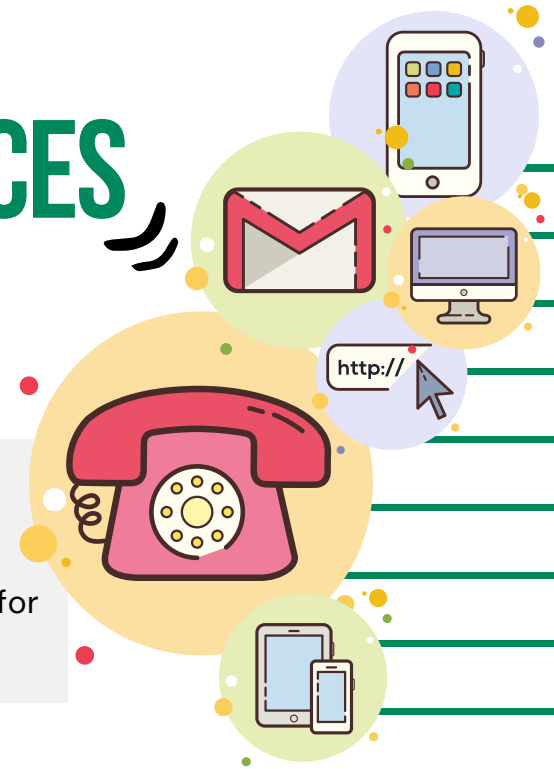


# CONTACT INFORMATION FOR TRANSPORTATION SERVICES

IN MERCER  
COUNTY



We hope this guide helps you get around Mercer County, whichever way you choose. We've compiled a list of resources like **phone numbers, websites, and e-mail addresses** in case you need to ask for assistance or more information. Safe and happy travels!



## BUS & TRAIN CONTACT INFORMATION

<b><u>Greater Mercer TMA</u></b>	Call <b>609-452-1491</b> for assistance	<a href="http://gmtma.org">gmtma.org</a>
<b><u>NJ TRANSIT</u></b>	For schedules, call <b>973-275-5555</b> or text <b>800-772- 2287</b>	<a href="http://njtransit.com">njtransit.com</a>
<b><u>NJ TRANSIT Access Link</u></b>	Call <b>973-491-4224</b>	<a href="http://accesslink.njtransit.com">accesslink.njtransit.com</a>
<b>ZLine and ZLine2, Route 130 Connection</b>	Call Greater Mercer TMA at <b>609-452-1491</b>	<a href="http://gmtma.org">gmtma.org</a>
<b><u>SEPTA</u></b>	215-580-7800	<a href="http://septa.org">septa.org</a>
<b><u>Amtrak</u></b>	1-800-USA-RAIL (872-7245)	<a href="http://amtrak.com">amtrak.com</a>
<b><u>Middlesex County RIDE</u></b>	Phone 732-745-7456	<a href="http://middlesexcountynj.gov">middlesexcountynj.gov</a>

## COMMUNITY TRANSPORTATION CONTACT INFORMATION

<b><u>Mercer County Community College (MCCC) Shuttle</u></b>	West Windsor Campus: 609-570-3740 Trenton Campus: 609-570-3161	<a href="http://mccc.edu/student_services_shuttle.shtml">mccc.edu/student_services_shuttle.shtml</a>
<b><u>Princeton TigerTransit</u></b>	609-258-8300 <a href="mailto:thepoint@princeton.edu">thepoint@princeton.edu</a>	<a href="http://transportation.princeton.edu">transportation.princeton.edu</a>

# COMMUNITY TRANSPORTATION CONTACT INFORMATION

**Mercer County T.R.A.D.E.**

609-530-1971; 609-275-2929 for  
Princeton/Hightstown rides

trade@mercercounty.org

**RideProvide**

609-452-5144  
Information and Reservations

rideprovide.org  
info@rideprovide.org

**Crosstown**

609-751-9699 to register  
609-452-5144 to schedule rides

princetonsenior.org/crosstown-  
transportation/

**Hopewell Valley Rides**

609-537-0236 to register  
609-452-5144 to schedule rides

hopewelltwp.org

**Modivcare (Medicaid)**

1-866-527-9933

modivcare.com

# SPECIAL TRANSPORTATION INFORMATION

**Go Go Grandparent**

Call 1-855-464 - 6872

gogograndparent.com/  
support@gogograndparent.com

**EZ Ride-Ryde4Life**

Call 201-939-4242 Ext. 4  
Or 1-866-208-1307, Option 4

ezride.org  
Ryde4Life@ezride.org

# SENIOR CENTER CONTACT INFORMATION

<u><a href="#">East Windsor</a></u>	609-371-7192	<a href="http://east-windsor.nj.us/">east-windsor.nj.us/</a>
<u><a href="#">Ewing Township</a></u>	609-883-1776 ext. 6205	<a href="http://ewingnj.org/resident/seniors">ewingnj.org/resident/seniors</a>
<u><a href="#">Hamilton</a></u>	609-890-3686	<a href="http://hamiltonnj.com/Seniors">hamiltonnj.com/Seniors</a>
<u><a href="#">Lawrence</a></u>	609-844-7048	<a href="http://lawrencetwp.com">lawrencetwp.com</a>
<u><a href="#">Mercer County</a></u>	609-989-6661	<a href="http://mercercounty.org">mercercounty.org</a>
<u><a href="#">Trenton</a></u>	609-989-3336	<a href="http://trentonnj.org">trentonnj.org</a>



[NJ TRANSIT Mobile App](#)



[NJ TRANSIT Access Link Mobile App](#)



[NJ TRANSIT MyBus Website](#)



[NJ TRANSIT Departure Vision](#)  
(Real time Departure Vision also available on the App)



[Google Maps](#)



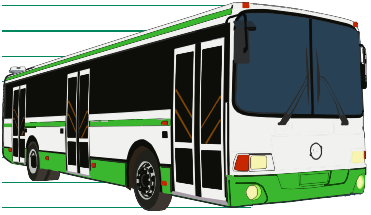
[Uber Website](#)



[Lyft Website](#)



[Amtrak](#)



# INTERESTED IN OUR TRAVEL TRAINING PROGRAM?

Travel training teaches people how to safely and independently travel on the bus, rail, light rail, and the other transportation services covered in this guide. Trainings are conducted by Greater Mercer TMA.

Riders learn how to plan their trips, read schedules, pay fares, use accessibility features and take safety precautions during their travel. Classes are typically conducted as small group trainings. Learn more about Greater Mercer TMA's program [here](#) or by visiting the website at [www.gmtma.org](http://www.gmtma.org).



This publication was prepared with funding from the North Jersey Transportation Planning Authority (NJTPA) and the Federal Highway Administration (FHWA). This document is disseminated under the sponsorship of NJTPA and FHWA in the interest of information exchange. NJTPA and FHWA assume no liability for its contents or use thereof.