

# Bikes and Transit

It's easy to take your bicycle with you on the bus or train. Greater Mercer TMA also provides bike lockers at the NJ TRANSIT Point Pleasant Beach station.

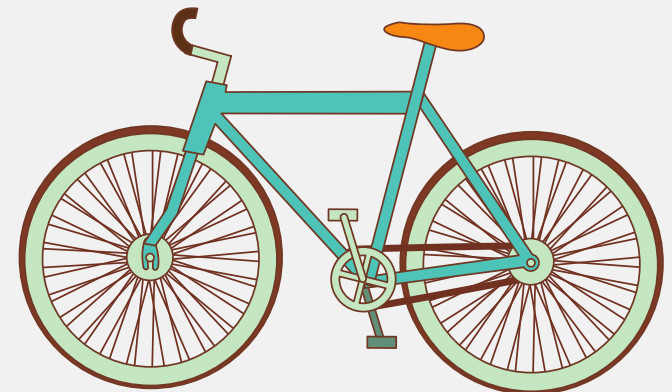
## On the Bus

Most buses used in Ocean County store bikes **underneath** the bus. Remember these tips for loading and unloading your bike:

- **LOADING:** When the driver opens the door tell him/her you want to take your bike with you. The driver will get off the bus and open the storage compartment underneath.
- **UNLOADING:** Remind the driver when getting off that you will need the driver's assistance to retrieve your bike.

Occasionally, regular city street buses may be used where the bike is stored on a rack secured to the front of the bus.

For more information and usage limitations, consult NJ TRANSIT Bike and Ride or call **973-275-5555**.



# Bikes and Transit

It's easy to take your bicycle with you on the bus or train. Greater Mercer TMA also provides bike lockers at the NJ TRANSIT Point Pleasant Beach station.

## On the Train

Bikes are allowed on **all NJ Transit trains** except peak-hour trains to Newark, Hoboken and New York City (6-10 AM) and peak-hour trains from those stations (4-7 PM). Bikes must be stowed in the **accessible areas of the train** but priority for those spaces is given to persons with disabilities.



## Rail Station Bike Lockers

Greater Mercer TMA is NJ TRANSIT's agent for bicycle locker rentals at Point Pleasant Rail Station. The enclosed lockers easily fit a bike, helmet and some gear. Lockers can be rented in six-month or one-year periods for \$7.50 per month with a \$50 deposit refunded upon return of the key. Call GMTMA at **609-452-1491** for more information.

