

# MOBILITY GUIDE *MERCER COUNTY*

KEEPING MERCER ON THE MOVE

## *A Resource Guide to Transportation*

Public Transit- Community Transportation Services – Private Services

Greater Mercer Transportation Management Association

FEBRUARY 2023

# ACKNOWLEDGEMENTS

Greater Mercer Transportation Management Association (GMTMA) is your local TMA. We are a non-profit, dedicated to providing and promoting transportation choices that improve mobility in Mercer County and Ocean County. Contact us at **609-452-1491** with questions on information in this guide or any other transportation needs.

This publication was prepared with funding from the North Jersey Transportation Planning Authority (NJTPA) and the Federal Highway Administration (FHWA). This document is disseminated under the sponsorship of NJTPA and FHWA in the interest of information exchange. NJTPA and FHWA assume no liability for its contents or use thereof.



# TABLE OF CONTENTS



- 1** INTRODUCTION

---
- 2** HOW TO RIDE THE BUS IN MERCER COUNTY

---
- 3** HOW TO RIDE THE TRAIN IN MERCER COUNTY

---
- 4** COMMUNITY TRANSPORTATION OPTIONS

---
- 5** HOW TO GET TO POPULAR DESTINATIONS

---
- 6** TRANSPORTATION NETWORK  
COMPANIES AND TRANSIT APPS

---
- 7** ACTIVE TRANSPORTATION: BIKING & WALKING

---
- 8** CONTACT INFORMATION AND RESOURCES

---

# INTRO: WHY THIS GUIDE?

Getting around Mercer County is easier than ever! For one, it's a prime location for one of the nation's most used public transportation providers, New Jersey Transit (NJ TRANSIT). In addition to transit, Mercer County has a host of other options designed to make personal mobility both simple and stress-free.



## Get to where you need to go.

Public transportation helps families and individuals access commercial places, healthcare, social services, jobs and educational opportunities, and interact with their communities.



## Safe and reliable service for all

This guide also includes options for individuals with disabilities or senior citizens that need to access transportation in a safe and reliable way.

Whether you want to ride the bus, train, light rail, or explore the numerous other transportation options available to you, this guide has the answers.

Take a look and learn the simple ins and outs of staying mobile in Mercer County.





# HOW TO RIDE THE BUS

IN MERCER  
COUNTY



There are several options for getting around by bus in Mercer County. This section will cover available routes, fares, and timetables.



*NJ  
TRANSIT*



*NJ TRANSIT operates New Jersey's public transportation system.*

Its mission is to provide safe, reliable, convenient and cost-effective mass transit service. Its bus and rail system also serves portions of New York State and Pennsylvania.

# PLANNING YOUR TRIP

## STEP 1: FIND A BUS ROUTE

NJ TRANSIT has a number of bus lines that serve Mercer County. To get going, you should check online for bus options in your community. The NJ TRANSIT **Trip Planner** can also help you figure out which route to take. You may reach out to their customer service at **973-275-5555** for assistance or call Greater Mercer TMA, your local transportation management association, at **609-452-1491** if you have any questions.



## STEP 2: CHECK THE TIMETABLE

Once you find the bus line that will get you where you need to go, download the route schedule online. Timetables can be obtained **online at NJ TRANSIT** or at most major bus and rail terminals. See the next page for instructions on how to read a timetable.

If you're on-the-go, you can also check bus schedules by calling **973-275-5555** or referring to **MyBus** for real-time bus arrivals at bus stops. Skip ahead for a step-by-step tutorial.



# TIMETABLES

Reading a timetable is easy! See the next page for an example of a time table and use the instructions below to practice.

- 01 Choose your **direction of travel** and choose the weekday (Monday–Friday) or weekend (Saturday, Sunday and holidays) section of the schedule.
- 02 Find the **location that you want to start from** on the timetable. Not all bus stops are listed on the timetable. The time points listed represent major stops on the bus route. The bus will also stop at locations along the route that are between the time points as long as it is safe to pull over. If your stop is between two time points, use the earlier time as your guide.
- 03 Select the **time that you want to start your trip** and read across the timetable to your destination to see the arrival time. If there is a letter listed to the left of the times listed for the trip that you plan to take, look for the explanation under or near the schedule block.



# HOW TO READ THE TIMETABLE

Service Designation

Destination

Route Number

**601**

ZLine To  
Matrix  
Business Park

Daily

MAP REF.	13	14
HAMILTON TWP - Hamilton Marketplace - Ruby Tuesday Bus Stop	510	525
ROBINSONVILLE - Matrix Business Park at 7A	540	600
	630	645
	705	720
	735	750
	500	515
	535	550
	605	620
	640	655



# To Hamilton Marketplace

Weekdays

Saturdays

Sundays

**WING** Village of New Jersey  
**WING** Mayville Rd. at Egberts Crossing Rd.  
**WING** Prospect St. at N. Olden Ave.  
**WING** Prospect St. at Calhoun St.  
**WING** State St. at S. Warren St.  
**WING** UNION TRANSIT CENTER - West Bus Stop  
**WING** Union Ave. at Barlow St.  
**WING** Union Ave. at Franklin St.  
**WING** UNION TWP. Park Ave. at Parkison Ave.  
**WING** Union TWP. Central Ave. at Arma Dr.  
**WING** UNION TWP. - Kmart Shopping Center  
**WING** Union TWP. - Kmart Shopping Center  
**WING** Union TWP. - Kmart Shopping Center  
**WING** Union TWP. - Kmart Shopping Center  
**WING** Union TWP. - Kmart Shopping Center  
**WING** Union TWP. - Kmart Shopping Center  
**WING** Union TWP. - Kmart Shopping Center  
**WING** Union TWP. - Kmart Shopping Center  
**WING** Union TWP. - Kmart Shopping Center  
**WING** Union TWP. - Kmart Shopping Center  
**WING** Union TWP. - Kmart Shopping Center  
**WING** Union TWP. - Kmart Shopping Center  
**WING** Union TWP. - Kmart Shopping Center  
**WING** Union TWP. - Kmart Shopping Center  
**WING** Union TWP. - Kmart Shopping Center  
**WING** Union TWP. - Kmart Shopping Center  
**WING** Union TWP. - Kmart Shopping Center  
**WING** Union TWP. - Kmart Shopping Center  
**WING** Union TWP. - Kmart Shopping Center  
**WING** Union TWP. - Kmart Shopping Center  
**WING** Union TWP. - Kmart Shopping Center  
**WING** Union TWP. - Kmart Shopping Center  
**WING** Union TWP. - Kmart Shopping Center  
**WING** Union TWP. - Kmart Shopping Center  
**WING** Union TWP. - Kmart Shopping Center  
**WING** Union TWP. - Kmart Shopping Center  
**WING** Union TWP. - Kmart Shopping Center  
**WING** Union TWP. - Kmart Shopping Center  
**WING** Union TWP. - Kmart Shopping Center  
**WING** Union TWP. - Kmart Shopping Center  
**WING** Union TWP. - Kmart Shopping Center  
**WING** Union TWP. - Kmart Shopping Center  
**WING** Union TWP. - Kmart Shopping Center  
**WING** Union TWP. - Kmart Shopping Center  
**WING** Union TWP. - Kmart Shopping Center  
**WING** Union TWP. - Kmart Shopping Center  
**WING** Union TWP. - Kmart Shopping Center  
**WING** Union TWP. - Kmart Shopping Center  
**WING** Union TWP. - Kmart Shopping Center  
**WING** Union TWP. - Kmart Shopping Center  
**WING** Union TWP. - Kmart Shopping Center  
**WING** Union TWP. - Kmart Shopping Center  
**WING** Union TWP. - Kmart Shopping Center  
**WING** Union TWP. - Kmart Shopping Center  
**WING** Union TWP. - Kmart Shopping Center  
**WING** Union TWP. - Kmart Shopping Center  
**WING** Union TWP. - Kmart Shopping Center  
**WING** Union TWP. - Kmart Shopping Center  
**WING** Union TWP. - Kmart Shopping Center  
**WING** Union TWP. - Kmart Shopping Center  
**WING** Union TWP. - Kmart Shopping Center  
**WING** Union TWP. - Kmart Shopping Center  
**WING** Union TWP. - Kmart Shopping Center  
**WING** Union TWP. - Kmart Shopping Center  
**WING** Union TWP. - Kmart Shopping Center  
**WING** Union TWP. - Kmart Shopping Center  
**WING** Union TWP. - Kmart Shopping Center  
**WING** Union TWP. - Kmart Shopping Center  
**WING** Union TWP. - Kmart Shopping Center  
**WING** Union TWP. - Kmart Shopping Center  
**WING** Union TWP. - Kmart Shopping Center  
**WING** Union TWP. - Kmart Shopping Center  
**WING** Union TWP. - Kmart Shopping Center  
**WING** Union TWP. - Kmart Shopping Center  
**WING** Union TWP. - Kmart Shopping Center  
**WING** Union TWP. - Kmart Shopping Center  
**WING** Union TWP. - Kmart Shopping Center  
**WING** Union TWP. - Kmart Shopping Center  
**WING** Union TWP. - Kmart Shopping Center  
**WING** Union TWP. - Kmart Shopping Center  
**WING** Union TWP. - Kmart Shopping Center  
**WING** Union TWP. - Kmart Shopping Center  
**WING** Union TWP. - Kmart Shopping Center  
**WING** Union TWP. - Kmart Shopping Center  
**WING** Union TWP. - Kmart Shopping Center  
**WING** Union TWP. - Kmart Shopping Center  
**WING** Union TWP. - Kmart Shopping Center  
**WING** Union TWP. - Kmart Shopping Center  
**WING** Union TWP. - Kmart Shopping Center  
**WING** Union TWP. - Kmart Shopping Center  
**WING** Union TWP. - Kmart Shopping Center  
**WING** Union TWP. - Kmart Shopping Center  
**WING** Union TWP. - Kmart Shopping Center  
**WING** Union TWP. - Kmart Shopping Center  
**WING** Union TWP. - Kmart Shopping Center  
**WING** Union TWP. - Kmart Shopping Center  
**WING** Union TWP. - Kmart Shopping Center  
**WING** Union TWP. - Kmart Shopping Center  
**WING** Union TWP. - Kmart Shopping Center  
**WING** Union TWP. - Kmart Shopping Center  
**WING** Union TWP. - Kmart Shopping Center  
**WING** Union TWP. - Kmart Shopping Center  
**WING** Union TWP. - Kmart Shopping Center  
**WING** Union TWP. - Kmart Shopping Center  
**WING** Union TWP. - Kmart Shopping Center  
**WING** Union TWP. - Kmart Shopping Center  
**WING** Union TWP. - Kmart Shopping Center  
**WING** Union TWP. - Kmart Shopping Center  
**WING** Union TWP. - Kmart Shopping Center  
**WING** Union TWP. - Kmart Shopping Center  
**WING** Union TWP. - Kmart Shopping Center  
**WING** Union TWP. - Kmart Shopping Center  
**WING** Union TWP. - Kmart Shopping Center  
**WING** Union TWP. - Kmart Shopping Center  
**WING** Union TWP. - Kmart Shopping Center  
**WING** Union TWP. - Kmart Shopping Center  
**WING** Union TWP. - Kmart Shopping Center  
**WING** Union TWP. - Kmart Shopping Center  
**WING** Union TWP. - Kmart Shopping Center  
**WING** Union TWP. - Kmart Shopping Center  
**WING** Union TWP. - Kmart Shopping Center  
**WING** Union TWP. - Kmart Shopping Center  
**WING** Union TWP. - Kmart Shopping Center  
**WING** Union TWP. - Kmart Shopping Center  
**WING** Union TWP. - Kmart Shopping Center  
**WING** Union TWP. - Kmart Shopping Center  
**WING** Union TWP. - Kmart Shopping Center  
**WING** Union TWP. - Kmart Shopping Center  
**WING** Union TWP. - Kmart Shopping Center  
**WING** Union TWP. - Kmart Shopping Center  
**WING** Union TWP. - Kmart Shopping Center  
**WING** Union TWP. - Kmart Shopping Center  
**WING** Union TWP. - Kmart Shopping Center  
**WING** Union TWP. - Kmart Shopping Center  
**WING** Union TWP. - Kmart Shopping Center  
**WING** Union TWP. - Kmart Shopping Center  
**WING** Union TWP. - Kmart Shopping Center  
**WING** Union TWP. - Kmart Shopping Center  
**WING** Union TWP. - Kmart Shopping Center  
**WING** Union TWP. - Kmart Shopping Center  
**WING** Union TWP. - Kmart Shopping Center  
**WING** Union TWP. - Kmart Shopping Center  
**WING** Union TWP. - Kmart Shopping Center  
**WING** Union TWP. - Kmart Shopping Center  
**WING** Union TWP. - Kmart Shopping Center  
**WING** Union TWP. - Kmart Shopping Center  
**WING** Union TWP. - Kmart Shopping Center  
**WING** Union TWP. - Kmart Shopping Center  
**WING** Union TWP. - Kmart Shopping Center  
**WING** Union TWP. - Kmart Shopping Center  
**WING** Union TWP. - Kmart Shopping Center  
**WING** Union TWP. - Kmart Shopping Center  
**WING** Union TWP. - Kmart Shopping Center  
**WING** Union TWP. - Kmart Shopping Center  
**WING** Union TWP. - Kmart Shopping Center  
**WING** Union TWP. - Kmart Shopping Center  
**WING** Union TWP. - Kmart Shopping Center  
**WING** Union TWP. - Kmart Shopping Center  
**WING** Union TWP. - Kmart Shopping Center  
**WING** Union TWP. - Kmart Shopping Center  
**WING** Union TWP. - Kmart Shopping Center  
**WING** Union TWP. - Kmart Shopping Center  
**WING** Union TWP. - Kmart Shopping Center  
**WING** Union TWP. - Kmart Shopping Center  
**WING** Union TWP. - Kmart Shopping Center  
**WING** Union TWP. - Kmart Shopping Center  
**WING** Union TWP. - Kmart Shopping Center  
**WING** Union TWP. - Kmart Shopping Center  
**WING** Union TWP. - Kmart Shopping Center  
**WING** Union TWP. - Kmart Shopping Center  
**WING** Union TWP. - Kmart Shopping Center  
**WING** Union TWP. - Kmart Shopping Center  
**WING** Union TWP. - Kmart Shopping Center  
**WING** Union TWP. - Kmart Shopping Center  
**WING** Union TWP. - Kmart Shopping Center  
**WING** Union TWP. - Kmart Shopping Center  
**WING** Union TWP. - Kmart Shopping Center  
**WING** Union TWP. - Kmart Shopping Center  
**WING** Union TWP. - Kmart Shopping Center  
**WING** Union TWP. - Kmart Shopping Center  
**WING** Union TWP. - Kmart Shopping Center  
**WING** Union TWP. - Kmart Shopping Center  
**WING** Union TWP. - Kmart Shopping Center  
**WING** Union TWP. - Kmart Shopping Center  
**WING** Union TWP. - Kmart Shopping Center  
**WING** Union TWP. - Kmart Shopping Center  
**WING** Union TWP. - Kmart Shopping Center  
**WING** Union TWP. - Kmart Shopping Center  
**WING** Union TWP. - Kmart Shopping Center  
**WING** Union TWP. - Kmart Shopping Center  
**WING** Union TWP. - Kmart Shopping Center  
**WING** Union TWP. - Kmart Shopping Center  
**WING** Union TWP. - Kmart Shopping Center  
**WING** Union TWP. - Kmart Shopping Center  
**WING** Union TWP. - Kmart Shopping Center  
**WING** Union TWP. - Kmart Shopping Center  
**WING** Union TWP. - Kmart Shopping Center  
**WING** Union TWP. - Kmart Shopping Center  
**WING** Union TWP. - Kmart Shopping Center  
**WING** Union TWP. - Kmart Shopping Center  
**WING** Union TWP. - Kmart Shopping Center  
**WING** Union TWP. - Kmart Shopping Center  
**WING** Union TWP. - Kmart Shopping Center  
**WING** Union TWP. - Kmart Shopping Center  
**WING** Union TWP. - Kmart Shopping Center  
**WING** Union TWP. - Kmart Shopping Center  
**WING** Union TWP. - Kmart Shopping Center  
**WING** Union TWP. - Kmart Shopping Center  
**WING** Union TWP. - Kmart Shopping Center  
**WING** Union TWP. - Kmart Shopping Center  
**WING** Union TWP. - Kmart Shopping Center  
**WING** Union TWP. - Kmart Shopping Center  
**WING** Union TWP. - Kmart Shopping Center  
**WING** Union TWP. - Kmart Shopping Center  
**WING** Union TWP. - Kmart Shopping Center  
**WING** Union TWP. - Kmart Shopping Center  
**WING** Union TWP. - Kmart Shopping Center  
**WING** Union TWP. - Kmart Shopping Center  
**WING** Union TWP. - Kmart Shopping Center  
**WING** Union TWP. - Kmart Shopping Center  
**WING** Union TWP. - Kmart Shopping Center  
**WING** Union TWP. - Kmart Shopping Center  
**WING** Union TWP. - Kmart Shopping Center  
**WING** Union TWP. - Kmart Shopping Center  
**WING** Union TWP. - Kmart Shopping Center  
**WING** Union TWP. - Kmart Shopping Center  
**WING** Union TWP. - Kmart Shopping Center  
**WING** Union TWP. - Kmart Shopping Center  
**WING** Union TWP. - Kmart Shopping Center  
**WING** Union TWP. - Kmart Shopping Center  
**WING** Union TWP. - Kmart Shopping Center  
**WING** Union TWP. - Kmart Shopping Center  
**WING** Union TWP. - Kmart Shopping Center  
**WING** Union TWP. - Kmart Shopping Center  
**WING** Union TWP. - Kmart Shopping Center  
**WING** Union TWP. - Kmart Shopping Center  
**WING** Union TWP. - Kmart Shopping Center  
**WING** Union TWP. - Kmart Shopping Center  
**WING** Union TWP. - Kmart Shopping Center  
**WING** Union TWP. - Kmart Shopping Center  
**WING** Union TWP. - Kmart Shopping Center  
**WING** Union TWP. - Kmart Shopping Center  
**WING** Union TWP. - Kmart Shopping Center  
**WING** Union TWP. - Kmart Shopping Center  
**WING** Union TWP. - Kmart Shopping Center  
**WING** Union TWP. - Kmart Shopping Center  
**WING** Union TWP. - Kmart Shopping Center  
**WING** Union TWP. - Kmart Shopping Center  
**WING** Union TWP. - Kmart Shopping Center  
**WING** Union TWP. - Kmart Shopping Center  
**WING** Union TWP. - Kmart Shopping Center  
**WING** Union TWP. - Kmart Shopping Center  
**WING** Union TWP. - Kmart Shopping Center  
**WING** Union TWP. - Kmart Shopping Center  
**WING** Union TWP. - Kmart Shopping Center  
**WING** Union TWP. - Kmart Shopping Center  
**WING** Union TWP. - Kmart Shopping Center  
**WING** Union TWP. - Kmart Shopping Center  
**WING** Union TWP. - Kmart Shopping Center  
**WING** Union TWP. - Kmart Shopping Center  
**WING** Union TWP. - Kmart Shopping Center  
**WING** Union TWP. - Kmart Shopping Center  
**WING** Union TWP. - Kmart Shopping Center  
**WING** Union TWP. - Kmart Shopping Center  
**WING** Union TWP. - Kmart Shopping Center  
**WING** Union TWP. - Kmart Shopping Center  
**WING** Union TWP. - Kmart Shopping Center  
**WING** Union TWP. - Kmart Shopping Center  
**WING** Union TWP. - Kmart Shopping Center  
**WING** Union TWP. - Kmart Shopping Center  
**WING** Union TWP. - Kmart Shopping Center  
**WING** Union TWP. - Kmart Shopping Center  
**WING** Union TWP. - Kmart Shopping Center  
**WING** Union TWP. - Kmart Shopping Center  
**WING** Union TWP. - Kmart Shopping Center  
**WING** Union TWP. - Kmart Shopping Center  
**WING**

# NJ TRANSIT MYBUS

NJ TRANSIT provides a real-time service information system for bus customers. The service, **mybus**, provides access to real-time bus location and arrival information. Customers can obtain their **bus stop ID** online at [njtransit.com](http://njtransit.com) or from mybus signs posted at bus stops statewide. Follow these easy steps to obtain information about your bus stop:

01

Locate the mybus sign above the NJ TRANSIT bus stop sign.

02

Identify the bus stop number.

03

Call **973-275-5555** or text your bus stop number to mybus (**69287**). You will be provided with the time of the next bus scheduled to arrive at your stop





# FARES



NJ TRANSIT fares operate on a zone system. **Your fare is based on the number of zones that you travel through.** Check the map on the schedule to see how many zones you travel through. You also can check fares by going to [Bus Point-to-Point Planner](#) and entering your travel information.

If you are beginning your trip on the River LINE and transferring to a bus, purchase one zone with a transfer ticket from the Ticket Vending Machine before boarding the River LINE.

ZONE	1	2	3	4	TRANSFER
REDUCED FARE	\$0.75	\$1.00	\$1.25	\$1.50	\$0.30
FULL FARE	\$1.60	\$2.25	\$2.75	\$3.35	\$0.70
MONTHLY PASS	\$54.00	\$71.00	\$83.00	\$90.00	N/A

Transfer must be purchased when boarding initial bus

## NJ TRANSIT Reduced Fare Program

Individuals age **62 and older** save **50% or more** on NJ TRANSIT tickets and passes. You can use cash to pay for these tickets and passes. You may be asked to show the driver an ID with proof of your age. Any ID with your date of birth and issued by a government, social service or mass transit agency is acceptable. You can also obtain a NJ TRANSIT Reduced Fare Card by calling NJ TRANSIT at **973-491-7112**.

# FARES

Once you've determined what route you want to take and how much your trip will cost, there are several ways to pay for the fares. If you're thinking about taking a single trip or purchasing a multi-trip bus pass, check the options below to see which one is most appropriate for you.

## *Pay the fare when you board.*

Tell the driver your destination so he or she can confirm your fare. All Mercer County buses (except the 409/418) **require exact change to pay the fare.** Drivers cannot make change. One dollar bills and coins are accepted. Cash and coins are inserted into a fare box.

## *Buy a pass for your regular commute.*

Bus passes are available at most major terminals and at local outlets throughout New Jersey. At NJ TRANSIT ticket offices and Ticket Vending Machines, monthly and FlexPass bus passes are available for purchase beginning at 5 p.m. on the 19th of the previous month through the 10th of the month for which the pass is valid.

## *Ticket Agents*

Commissioned Ticket Agents (CTA) are private retail businesses that sell NJ TRANSIT bus tickets or passes on the agency's behalf. In Mercer County, there is one CTA office in Trenton where you can buy one way, monthly, and 10-trip passes.

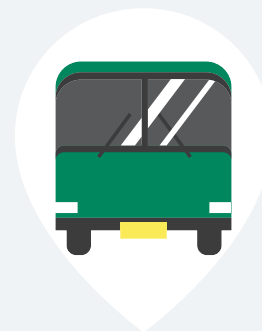
**Fuji Newsstand** 2 North Broad Street, Trenton, NJ  
Call **609-393-1115** for more info.



# TIPS FOR FLAGGING THE BUS

- 01 Wait for your bus at a designated bus stop where you see a bus stop sign or at a location where you have been told by a NJ TRANSIT representative to wait. Check the **bus stop sign** to make sure that your bus stops there.
- 02 Arrive at your stop at least **5 mins. earlier** than the scheduled bus departure time.
- 03 When you see the bus approaching, **raise your arm and wave your hand** to the bus driver as a signal that you would like to board the bus.
- 04 Check the **destination sign** on the bus before boarding. Some buses have multiple destinations. If you are unsure, ask the driver. They will be glad to assist you.

When the bus arrives at the stop, **board carefully and use the handrails** if needed to assist you as you step on the bus.



**All NJ TRANSIT buses can kneel** (lowering the distance to the first step) making it easier to board the bus. If you need the bus to kneel to climb aboard, do not hesitate to ask the driver for this service. All NJ Transit routes are also operated with **lift-equipped buses**.

# TRANSFERS

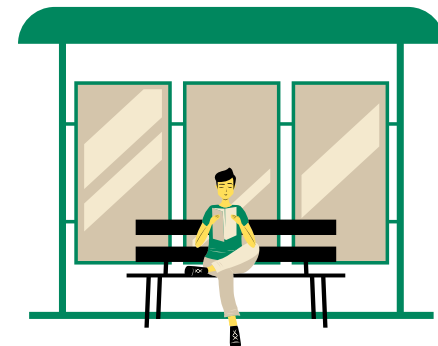
Sometimes it is necessary to transfer to another bus or light rail line to reach your destination. For these times, you need to purchase a transfer. Using a transfer saves money and is less expensive than paying the fare without a transfer on the second bus.

## How much is a Transfer?

Transfers are purchased from the bus operator when you are paying for your fare. Transfers for full fares cost \$.70 and \$.30 for reduced fares.

## How long do Transfers work?

The transfers are valid for two hours after your purchase. The transfers are valid for using a second bus or the NJ TRANSIT River LINE for a one zone ride. If travel on the second bus is greater than one zone, there will be an additional charge.



If you are beginning your trip on the River LINE and transferring to a bus, **purchase one zone with a transfer ticket** from the Ticket Vending Machine before boarding the River LINE.

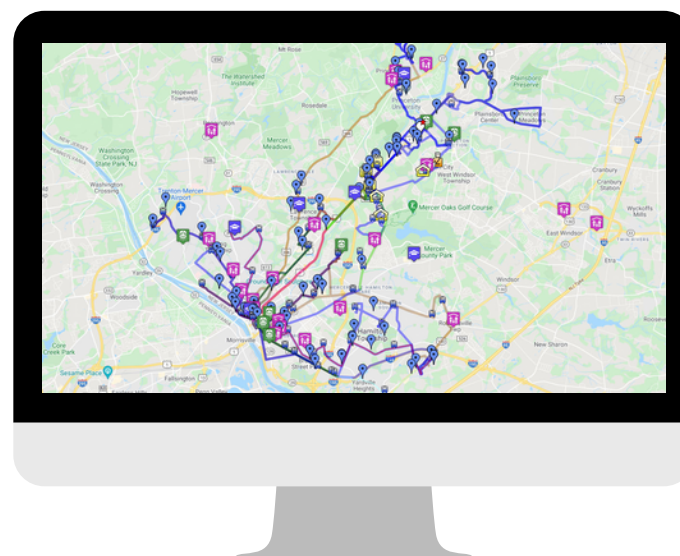


# NJ TRANSIT ROUTES



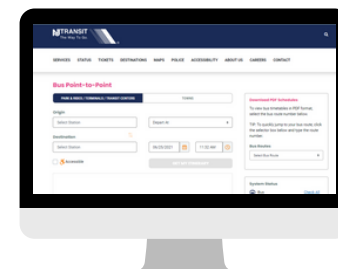
NJ TRANSIT operates an extensive bus network of intra and interstate routes throughout New Jersey and into New York and Philadelphia. There are many local routes, 600, 601, 603, 605, 606, 607, 608, 609, 611, 612, 613, 619, and 624 within Mercer County. Service to Philadelphia is also provided on the 409/418. Find the route that's right for you and get on board.

**See the next page** for information on routes in Mercer County and where to find service schedules and timetables. To view NJ TRANSIT's Mercer County Bus Routes on our interactive map, **[click here](https://gmtma.org/interactive-map/)** or visit [gmtma.org/interactive-map/](https://gmtma.org/interactive-map/)



# NJ TRANSIT ROUTES

Click on the route numbers below to view NJ TRANSIT Timetables. You may also view and download PDF versions from the [NJ TRANSIT website](https://www.njtransit.com).



Route	Terminus #1	Terminus #2
<a href="#"><u>600</u></a>	Trenton Transit Center	Plainsboro
<a href="#"><u>601</u></a>	The College of New Jersey	Hamilton Marketplace
<a href="#"><u>603</u></a>	Mercer Mall	Hamilton Square
<a href="#"><u>605</u></a>	Quaker Bridge Mall	Montgomery Twp.
<a href="#"><u>606</u></a>	Princeton	Hamilton Marketplace
<a href="#"><u>607</u></a>	Ewing	Hamilton Ind. Plaza
<a href="#"><u>608</u></a>	Ewing	Hamilton Station
<a href="#"><u>609</u></a>	Ewing	Quaker Bridge Mall
<a href="#"><u>612</u></a>	Princeton Junc. Rail Station	Lawrence Twp. Loop
<a href="#"><u>613</u></a>	Mercer Mall	Hamilton Marketplace
<a href="#"><u>619</u></a>	Ewing	Mercer Community College
<a href="#"><u>624</u></a>	Pennington	East Trenton
<a href="#"><u>409</u></a>	Philadelphia	Trenton Transit Center
<a href="#"><u>418</u></a>	Camden	Trenton Transit Center

# BIKES ON THE BUS

It's easy to take your bicycle with you on the bus or train. Greater Mercer TMA also provides bike lockers at NJ TRANSIT Hamilton and Princeton Junction stations.

## On the Bus

When you bring your bike with you on the bus, just use the racks on the front! Bikes must be stored underneath in some buses.

Remember these tips for loading and unloading your bike:

- **Have your bike ready when the bus approaches.** When it arrives, tell the operator you are going to use the rack. Load and unload from the curb side of the bus.
- **Pull the bike rack down with one hand and lift the bike onto it with the other.** The rack has slots labeled "front" and "back" for the tires. Raise and release the support arm so it rests on the front tire.
- **When you get off, tell the driver you are unloading your bike.** Remove the support bar, unload your bike and fold the rack back up if no one else is using it.

For more information and usage limitations, consult NJ TRANSIT Bike and Ride or call **973-275-5555**.



# NJ TRANSIT ACCESS LINK

Provided by NJ TRANSIT, **Access Link** is a **curb-to-curb service** for people with disabilities who are unable to use the local fixed-route bus. In order to use **Access Link**, you must first apply for eligibility. The service operates at the same time as the fixed-route bus.

## Reduced Fares

- Like the bus, it is a shared ride system offering **curb-to-curb service**.
- Pick-up and drop-off points must be within **3/4 of a mile** from a fixed bus route or light rail station.
- Access Link drivers have a **20-minute** window before and after your scheduled pick-up time.
- Reservations for Access Link can be made by calling **1-800-955-2321** from 7:30 AM until 4:00 PM at least 24 hours before the trip (but no more than seven days.)
- Between 3:00 PM and 4:00 PM, customers are limited to next-day trips only.



## Access Link Mobile App



The **NJ TRANSIT Access Link mobile app** allows eligible users to create, cancel, and monitor reservations, update customer information, and check the status of EZ-Wallet payment accounts. It is available for download on Apple and Android devices.



# ***MORE BUS SERVICES IN MERCER COUNTY***



Mercer County has a robust network of public and private bus services that connect to destinations throughout New Jersey and into New York and Philadelphia.

Greater Mercer TMA can help you find the ones that work for you.



## Service Route

The ZLine is a free bus service providing transportation to and from the **Matrix Business Park at Exit 7A** and the **Amazon Fulfillment Center in Robbinsville**.

The ZLine meets **NJ TRANSIT 601, 606 and 613 and some Route 130**

**Connection buses** at the Hamilton Marketplace in Hamilton Township.

## Fare Information

Pay your fare on a NJ TRANSIT bus or the Route 130 Connection and then ride the ZLine to work for **FREE**.  
No transfer fee is required.

## Schedule

The ZLine operates everyday from Monday to Sunday, 364 days a year except for Christmas Day. See the table on the right to know when and where to catch the next ride. For more information [click here](#) or call Greater Mercer TMA at **609-452-1491**.

Hamilton Marketplace	Amazon EWR4	Hamilton Marketplace
	4:50 AM	5:05 AM
5:10 AM	5:25 AM	5:40 AM
5:45 AM	6:00 AM	6:15 AM
6:30 AM	6:45 AM	7:00 AM
7:05 AM	7:20 AM	7:35 AM
7:35 AM	7:50 AM	8:05 AM
11:40 AM	11:55 AM	12:10 PM
2:00 PM	2:20 PM	2:35 PM
5:00 PM	5:15 PM	5:30 PM
5:35 PM	5:50 PM	6:05 PM
6:05 PM	6:20 PM	6:35 PM
6:40 PM	6:55 PM	7:10 PM





## Service Route

The ZLINE2 is a **free** shuttle service to Amazon sort center–PNE5 in Robbinsville Township. ZLINE2 will meet NJ TRANSIT buses and some **Rt. 130 Connection bus** trips at the **Hamilton Marketplace Ruby Tuesday** bus shelter in Hamilton Township. The ZLINE2 service is provided by either an A1 Limousine mini-bus or van.

## Fare Information

Pay your fare on a NJ TRANSIT bus or the Route 130 Connection and then ride the ZLine to work for **FREE**. No transfer fee is required.

## Schedule

The ZLine operates everyday from Monday to Sunday,, 364 days a year except for Christmas Day. See the table on the right to know when and where to catch the next ride. For more information [click here](#) or call Greater Mercer TMA at **609-452-1491**.

Hamilton Marketplace	Amazon PNE5	Hamilton Marketplace
12:30 PM	12:45 PM	1:00 PM
1:00 PM	1:15 PM	1:30 PM
1:30 PM	1:45 PM	2:00 PM
2:00 PM	2:15 PM	2:35 PM
	5:45 PM	6:00 PM
6:05 PM	6:20 PM	6:35 PM
6:40 PM	6:55 PM	7:10 PM
7:30 PM	7:45 PM	8:00 PM



# ROUTE 130 CONNECTION



## Service Route

The Route 130 Connection serves the Trenton area and eastern Mercer County. The service runs between the Trenton Transit Center and Monroe Township in Middlesex County with stops at Hamilton Rail Station, Mercer County Community College–West Windsor Campus, Hamilton Marketplace, Highstown, East Windsor and the business parks along Route 130 and near the New Jersey Turnpike Exit 8A.

## Fare Information

The fare is \$1 each way and exact change is required.

WFNJ clients ride free by showing their county-issued

·WFNJ/MCBOSS ID.

.

## Schedule

The Route 130 Connection operates from Monday to Saturday. There is no service on Sunday. The schedule is available online on the [Mercer County website](http://mercercounty.org) at [mercercounty.org](http://mercercounty.org). [Click here](#) to view the schedule or call Greater Mercer TMA at **609-452-1491**.

## Connections

The Route 130 Connection links with the following transit services:

**Trenton Transit Center:** 409, 418, 600, 601, 606, 607, 608,

609, 613, 619, 624, NEC Train, SEPTA, Amtrak, River LINE

**Hamilton Train Station:** 606, 608, NEC Train

**Hamilton Marketplace:** 601, 613, 606, ZLine

**Route 130 & Half Acre Road:** Middlesex County M1



# ***SOUTHEASTERN PENNSYLVANIA TRANSPORTATION AUTHORITY (SEPTA)***

## ***Service Route***

The Southeastern Pennsylvania Transportation Authority (SEPTA) provides bus and rail service for the Philadelphia region. Its primary service area includes Bucks, Chester, Montgomery, Delaware and Philadelphia counties. Some of the services extend outside their region to nearby cities such as Trenton. **The Route 127 bus** serves Bucks County extending into the city of Trenton. The route terminus begins at the Trenton Transit Center and the other terminus is the Oxford Valley Mall in Falls Township.



## ***Fare Information***

The Route 127 has a fare of \$2.25. Transfers are \$1.00

# HOW TO RIDE THE TRAIN

IN MERCER  
COUNTY



There are several options for getting around by train in Mercer County. This section will cover available routes, fares, and timetables.

# TRAIN SERVICE IN MERCER COUNTY

NJ TRANSIT provides rail service along the **Northeast Corridor rail line** between Trenton and New York City. The following stations are located in Mercer County:

**Trenton Transit Center** 72 South Clinton Ave., Trenton

**Hamilton Station** Sloan Ave. near I-295, Hamilton

**Princeton Junction** 2 Wallace Rd., West Windsor



NJ TRANSIT provides train shuttle service called the **Princeton Shuttle (Dinky)** between **Princeton Borough (Alexander Rd.)** and **Princeton Junction**.



Additionally, the NJ TRANSIT light rail service on the **River LINE** from **Trenton to Camden** has three stops located in Mercer County, all within Trenton: Cass Street, Hamilton Avenue, and Trenton Transit Center.



**SEPTA** provides regional train service between Mercer County and Philadelphia. There are stops in Trenton and West Trenton.



**Amtrak** operates two train stations in Mercer County, one in Trenton and the other at Princeton Junction.



# NJ TRANSIT

NJ TRANSIT provides train service along the **Northeast Corridor (NEC) train line** between New York City and Trenton. Check the [NJ TRANSIT website](#) for timetables or call **973-275-5555** for more information. Physical timetables can be found at most rail stations. You can see which stations are origins and destinations for each train on that particular route. Remember, not all trains stop at each station on a given run.



To learn how to read a timetable, follow the instructions below and practice with the table on the next page.

**01** Once you know which two rail stations you will be traveling between, using train timetables is a snap. **First**, identify the section for the direction in which you would like to travel (AM or PM, weekday or weekend.)

**02** **Next**, find your desired station by reading down on the list and follow the line to the right until you get to your desired departure time. It's that easy!

**03** To find out **when you will arrive**, start at the departure time you just found and follow the column down until you reach the time across from your arrival location.

If you are unsure of which stations you need, the NJ TRANSIT website can assist you by allowing you to use a landmark or street to find the appropriate station. As always, call Greater Mercer TMA at **609-452-1491** for assistance.

# TIMETABLES

Final Destination

Train Numbers

TO

NEWARK/NEW YORK

MONDAY – FRIDAY

NOTE: Trains with a Q below the train number are part of NJ TRANSIT's Quiet Commute program.

AM

Time

TRAINS	3806	3808	3204	3700	3910	3810	3208	3702	3812	3814	3914	3212	3706	3918	3818	3708	3920	3124	3502	3710	3922	3126	3712	3926	3504	3828	3714	3506
				Q	Q	Q	Q	Q	Q	Q	Q	Q	Q	Q	Q	Q	Q	Q	Q	Q	Q	Q	Q	Q	Q	Q	Q	Q
Departing from:																												
via SEPTA from Philadelphia																												
Jefferson Station																	535											
Suburban Station																	540											
30th Street Station																	544											
arrive TRENTON TRANSIT CTR																	636											
TRENTON TRANSIT CENTER	348	422			506	456			521	546	601			623	611		646				716				731		723	
Hamilton	354	428			513	502			527	553	607			630	617		653				723				738		729	
via Princeton Shuttle					458	458			523	550	550			626	550		651				720						720	
arrive Princeton Junction					503	503			528	555	555			631	555		656				725						725	
Princeton Junction	400	435			520	509			534	601	615			637	625		701				731				745		736	
Jersey Avenue					501				526					625			652				715				736			755
New Brunswick	414	449			506				523	534	549	616		632	645	659		707		721				735	743		754	801
Edison	418				510				528	538	553	621		636	645	704		712		727				741	748		759	806
Metuchen	423				515				533	543	558	626		642	650	710		718		733				746	754		804	812
Metropark	427	458			520				537	547	603	631		647	655	711		724		739				752	759		809	817
Rahway	434				521	526			548	554	611			638		703				725						800		823

Departure Stations

Departure Times

# BUYING THE TRAIN TICKET

**Fares are based on the locations between which the trip occurs.** Individuals with disabilities and seniors 62 and older with valid I.D. will receive **reduced fares** on all train trips.



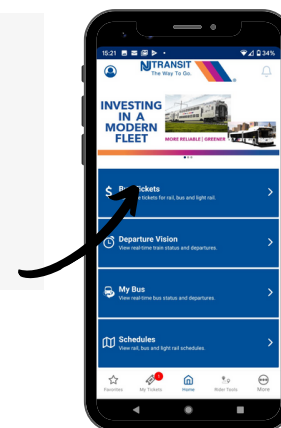
## ***Ticket Offices or Ticket Vending Machines (TVM)***

Most rail stations have Ticket Offices or Ticket Vending Machines (TVMs). TVMs are easy to use. Simply follow the on-screen instructions. TVMs accept cash, debit cards and credit cards.

The NJ TRANSIT Station and Parking Guide, which is available at the NJ Transit website, provides additional details about Ticket Office hours and TVM locations.

## ***MyTix on the NJ Transit Mobile App***

Train tickets and passes can now be purchased with your mobile phone through **MyTix** using a credit or debit card, a prepaid credit card. or Apple Pay, Google Pay and PayPal.





# NJ TRANSIT RIVERLINE



The River LINE is a light rail train that operates from Trenton to Camden with stations at three Trenton locations: Trenton Transit Center, Hamilton Avenue, and Cass Street. You can find the schedules [online](#) or on the NJ TRANSIT app.



## Buying tickets

Tickets must be purchased from the **station or Ticket Vending Machine (TVM)** before boarding. When you ride light rail, your one-way ticket must be time stamped at the time of purchase through a TVM or at a **validator box** before boarding, or you will be subject to a fine. You can also purchase daily light rail tickets in the **NJ TRANSIT Mobile App**. Monthly passes, transfers, and trip ticket receipts do not need to be time stamped.

*Validator boxes are usually bright orange.*

## Riding the Riverline

Once on board, sit and enjoy the ride to your destination. When the train comes to a complete stop upon your arrival, push the green button to open the doors.

## Real-time Updates

Now you can find out when the next train is arriving through [MYLIGHTRAIL](#). Simply call **973-275-5555** or text the **light rail Station ID to 69287** and you will get the next scheduled train to arrive at your station.

## Reduced Fares

Senior Citizens 62 and older and passengers with disabilities can travel at a reduced fare of one-half the regular one-way fare or less at all times. You will need a valid ID to obtain the reduced fare. To learn more, visit the [Reduced Fare Program](#) website.



# AMTRAK

Amtrak operates two train stations in Mercer County, one in Trenton and the other at Princeton Junction. Amtrak also runs a high speed train, the Acela Express, from Boston to Washington D.C. To start planning your trip, visit the Trip Planner and view the available schedules and routes. Travelers 65 years of age and over are eligible to receive a **10% discount** on most rail fares on most Amtrak trains.. Visit their website to find out more.



# SOUTHEASTERN PENNSYLVANIA TRANSPORTATION AUTHORITY (SEPTA)



SEPTA has two regional train lines that serve Mercer County. The Trenton Line terminates at the Trenton Transit Center. The West Trenton Line terminates in West Trenton, Ewing Township. Both lines provide service to Center City Philadelphia with local stops in Bucks County.

To ride the regional train lines, tickets must be purchased at the train station or a penalty is applied to the fare. For stations that do not have a building with a ticket vendor, a penalty is not applied for tickets purchased on board.

# BIKES ON THE TRAIN

It's easy to take your bicycle with you on the bus or train. Greater Mercer TMA also provides bike lockers at NJ TRANSIT Hamilton and Princeton Junction stations.

## On the Train

Bikes are allowed on **all NJ Transit trains** except peak-hour trains to Newark, Hoboken and New York City (6:00–10:00 AM) and peak-hour trains from those stations (4:00–7:00 PM). Bikes must be stowed in the **accessible areas of the train** but priority for those spaces is given to persons with disabilities. The River LINE light rail allows bicycles at any time but they must be stowed in the low vestibule section or on hanging racks.



## Rail Station Bike Lockers

Greater Mercer TMA is NJ TRANSIT's agent for bicycle locker rentals at Hamilton, Princeton Junction. The enclosed lockers easily fit a bike, helmet and some gear. Lockers can be rented in six-month or one-year periods for \$7.50 per month with a \$50 deposit refunded upon return of the key. Call GMTMA at **609-452-1491** for more information.



# COMMUNITY TRANSPORTATION OPTIONS

IN MERCER  
COUNTY



In this section, we cover several community-led programs in Mercer County that provide flexible and accessible transportation services that help people stay independent, participate in their communities, and access vital public services and employment. These programs include school-sponsored services, non-emergency medical transportation, shuttles for seniors and people with disabilities, and others.



# MERCER COUNTY T.R.A.D.E.



<b>Service Area</b>	Mercer County
<b>Eligibility</b>	Seniors (60+) and individuals with disabilities
<b>Fare</b>	FREE (\$1 suggested donation)
<b>Contact Information</b>	609-530-1971 or <a href="mailto:trade@mercercounty.org">trade@mercercounty.org</a> ; 609-275-2929 for Princeton/Hightstown rides

**T.R.A.D.E.** is a service operated by Mercer County to provide trips for registered **senior citizens (60+)** and **individuals with disabilities**. Trips are offered on an **ongoing (subscription) or as-needed** basis. Reservations are made **9:00 AM—4:30 PM** up to **14 days** in advance. Those in need of lift equipment or space for a mobility assistant can arrange for them when making a reservation. To register, call T.R.A.D.E. at **609-530-1971**. Trips are free but there is a \$1.00 suggested donation.

**Website:** [www.mercercounty.org/departments/transportation-and-infrastructure/t-r-a-d-e](http://www.mercercounty.org/departments/transportation-and-infrastructure/t-r-a-d-e)





### *Service Area*

Mercer County, Plainsboro, Montgomery south of Rt. 518

### *Eligibility*

Seniors **(65+)** and adults with visual impairments

### *Hours*

Weekdays 8:00 AM—5:00 PM

### *Fare*

Based on zones

### *Contact Information*

609-452-5144; [info@rideprovide.org](mailto:info@rideprovide.org)

Another transportation option is **RideProvide**, a membership service available to seniors and visually impaired adults. Door to door transportation is provided for any trip purpose in a private automobile. Reservations must be made two days before the ride. Free trips are provided to and from Penn Medicine Princeton Health facilities, RWJ Hamilton Hospital, and other select RWJ facilities.

**Website:** [www.rideprovide.org](http://www.rideprovide.org)

# CROSSTOWN



<i>Service Area</i>	Princeton
<i>Eligibility</i>	Seniors <b>(65+)</b> and non-driving individuals with disabilities
<i>Hours</i>	Weekdays 8:00 AM—5:00 PM
<i>Fare</i>	\$3 per one-way voucher
<i>Contact Information</i>	609-751-9699 to register 609-452-5144 to schedule rides

**Crosstown** provides door-to-door transportation within Princeton only for residents **65 years and older or disabled who do not drive**. Reservations must be made at least a day ahead of time. Rides are provided by car through the RideProvide program. You must register first with **Princeton Senior Resource Center**.

Rides may be scheduled to anywhere within the municipality, to Penn Medicine Princeton Health, and to Princeton Fitness and Wellness Center. Rides and return trips may be scheduled for any purpose. Rides are paid for with **\$3 vouchers**, available for purchase at Suzanne Patterson Building (credit card, cash, or check) Spruce Circle or Elm Court (cash or check), or on the **website form**.

**Website:** [www.princetonsenior.org/crosstown-transportation/](http://www.princetonsenior.org/crosstown-transportation/)

# HOPEWELL VALLEY RIDES

Service Area	Pennington Borough, Hopewell Borough, Hopewell Township
Eligibility	Seniors ( <b>65+</b> ) and non-driving individuals with disabilities
Hours	Weekdays 8:00 AM—5:00 PM
Fare	\$5 per one-way voucher
Contact Information	609-537-0236 to register and purchase vouchers. 609-452-5144 to schedule rides

**Hopewell Valley Rides** is a transportation service offered by **Hopewell Township**. It is available to residents age **60+** and **adults with disabilities** within Hopewell Valley (Pennington, Hopewell Borough, Hopewell Twp.) Wheelchair accessible service is available. The Hopewell Valley Rides **brochure** contains more information. Rides are provided by car through the RideProvide program.

You will first need to register by contacting Hopewell Valley Senior Services at **(609) 537-0236**. You will also need to register a caregiver if they will be travelling with you. Using the same number, you may purchase ride vouchers for \$5 for a one-way trip. To request a ride, call **RideProvide** directly at **(609) 452-5144** between 8:30 AM to 3:30 PM weekdays. Rides should be requested **48 hours in advance** to ensure availability. Rides are available from 8:00 AM to 5:00 PM, Monday through Friday. Free trips are provided to and from Princeton Healthcare System facilities and RWJ Hospital and select facilities.

**Website:** [www.hopewelltpw.org/DocumentCenter/View/129/Hopewell-Valley-Rides-Brochure-PDF](http://www.hopewelltpw.org/DocumentCenter/View/129/Hopewell-Valley-Rides-Brochure-PDF)





# EAST WINDSOR COMMUNITY BUS

<i>Service Area</i>	East Windsor Township
<i>Eligibility</i>	General Public
<i>Hours</i>	9:00 AM departure, 11:00 AM return
<i>Fare</i>	Minimum of \$0.25 each way
<i>Contact Information</i>	609-371-7192

**East Windsor Community Bus** provides rides to multiple populations within **East Windsor** township. The bus runs on a scheduled route Monday through Thursday and on most Fridays. The bus makes regular stops at the following senior citizen housing developments: Wheaton Pointe, 20 Lanning Boulevard, East Windsor St. James Village, 719 St. James Place, East Windsor The Enchantment, 1 Hight Boulevard, Hightstown. The bus service to local shopping centers and medical offices is available Monday through Friday.

Call the East Windsor Senior Center at **609-371-7192** for more information.

**Website:** <https://evogov.s3.amazonaws.com/media/21/media/1189.pdf>

# EWING TOWNSHIP SENIOR CENTER

<i>Service Area</i>	Ewing Township
<i>Eligibility</i>	Seniors (60+)
<i>Hours</i>	Monday—Friday: 8:30 AM—3:00 PM
<i>Fare</i>	<b>FREE</b>
<i>Contact Information</i>	609-883-1776 ext. 6205 609-468-9364 for reservations

The **Ewing Township Senior Center** provides transportation for its Ewing Seniors, aged **60 and older** who are unable to drive. The service provides transportation for **shopping, medical, and senior center** trips to places such as the Community Centers, the ESCC and Hollowbrook for Ewing Senior social events and Mercer County nutrition. Transportation is available Monday— Friday **8:30 AM—3:00 PM**. Reservations must be made at least one day in advance. Pick up can be as early as 8:00 AM for special appointments. Clients are encouraged to not schedule medical appointments after 1:30 PM. All transporting is done within Ewing, Franklin Corner Road (Doctor's Row) is the only exception. There may also be mall trips (Quakerbridge, Mercer, Kohls, Walmart), and the Columbus Farmer's Market on special occasions. Reservations can be made Monday–Friday between 9:00 AM–1:00 PM. Call Justin Latini at **609-468-9364**.

**Website:** [www.ewingnj.org/resident/seniors](http://www.ewingnj.org/resident/seniors)



# HAMILTON SENIOR CENTER

<i>Service Area</i>	Hamilton Township
<i>Eligibility</i>	Seniors (65+)
<i>Hours</i>	Weekdays 8:30 AM—1:30 PM
<i>Fare</i>	FREE
<i>Contact Information</i>	609-890-3686

**Hamilton Senior Center** provides curb-to-curb transportation to township seniors to medical appointments (Monday—Friday, **8:30 AM to 1:30 PM**), grocery stores (Monday—Thursday on a weekly or bi-weekly basis) and the Senior Center. Advance noticed is needed to arrange your trips. To arrange transportation please call **609-890-3686**.

**Website:** <https://www.hamiltonnj.com/Seniors>



# LAWRENCE TOWNSHIP SENIOR CENTER

<i>Service Area</i>	Lawrence Township
<i>Eligibility</i>	Seniors (60+)
<i>Hours</i>	Monday—Friday: 9:00 AM—3:30 PM
<i>Fare</i>	<b>FREE</b>
<i>Contact Information</i>	609-844-7048

The **Lawrence Township Senior Center** provides transportation for its senior residents (60+). The service provides transportation for medical and Senior Center trips. Riders must be registered at the Senior Center and must be able to step into the vehicle independently. Transportation is available **Monday—Friday 9:00 AM—2:00 PM**. Reservations must be made between **8:30 AM—4:30 PM** at least **two days** in advance.

**Website:** <https://www.lawrencetwp.com/departments/Office-on-Aging-Senior-Center>

# MEDICAID TRANSPORTATION



Medicaid HMO enrollees can have free, non-emergency medical transportation from Motivcare, formerly known as Logisticare.

Drivers pick members up at their homes, take them to their appointments and bring them home in a timely manner.

To arrange for a trip, call **1-866-527-9933** between **8:00 AM-4:00 PM** on Mondays to Fridays. You will need to book **at least 2 days ahead**. When calling, you will need to provide the following information:

- Enrollee's Medicaid ID number
- Date of birth
- Date & time of the trip
- Trip confirmation number (If you already have a routine ride or are making modifications to an existing ride agreement)

You may also set up an account on their website <https://member.logisticare.com/en/login> and book and manage your rides from there.



## Numbers and Sites to Know



**1-866-527-9933**

or visit [www.modivcare.com](http://www.modivcare.com)

# MERCER COUNTY COMMUNITY COLLEGE



<b>Service Area</b>	West Windsor, Trenton, Princeton
<b>Eligibility</b>	MCCC students, faculty, and staff
<b>Fare</b>	<b>FREE</b>
<b>Contact Information</b>	West Windsor Campus: 609-570-3740 Trenton Campus: 609-570-3161

**Mercer County Community College (MCCC)** provides **free direct shuttle service** on weekdays for students, faculty, and staff who wish to travel between the college's West Windsor Campus and either of two locations – to and from the college's Trenton Campus, or to and from Quaker Bridge Mall in Lawrenceville (where NJ TRANSIT buses connect to Lawrenceville, the Ewing 609 route, and Princeton 605 route). Students from the Princeton and Plainsboro areas can travel on NJ TRANSIT to the Quakerbridge Mall and connect with another MCCC shuttle that runs between the Mall and MCCC. The shuttles run on **different schedules every school semester**. Visit the **MCCC website** for up to date schedules and rules and regulations. These handicapped-accessible MCCC courtesy shuttles operate on a first-come first-served basis. Children and/or non-students are not permitted to ride the shuttles.



# PRINCETON MUNI



<i>Service Area</i>	Princeton
<i>Eligibility</i>	Open to the public
<i>Fare</i>	<b>FREE</b>
<i>Contact Information</i>	(609) 874-0699, <a href="mailto:princetonops@wedriveu.com">princetonops@wedriveu.com</a>

The Municipality of Princeton provides residents and visitors with a free bus service to get around town. The bus operates Monday – Saturday from 7:30 AM – 8:50 PM; exclusive of the observed day for these major holidays: New Year’s Day, MLK Day, Memorial Day, Independence Day, Labor Day, Thanksgiving, and Christmas. The Muni makes connections with NJ TRANSIT (605, 606 routes), TigerTransit routes, and Suburban bus lines (100/600). All vehicles are ADA-accessible.

The schedule for the Princeton Muni can be accessed:

1. On the Municipality’s **website**
2. By emailing the Service Provider, WedriveU **[@princetonops@wedriveu.com](mailto:@princetonops@wedriveu.com)**
3. Through the Tripshot app in the Apple Store and Google Play

Use the **Tripshot** app to track the bus online or download the app to your phone.

# PRINCETON TIGER TRANIST



<i>Service Area</i>	Princeton, Princeton Junction, West Windsor,
<i>Eligibility</i>	Princeton students and public
<i>Fare</i>	<b>FREE</b>
<i>Contact Information</i>	609-258-8300, <a href="mailto:thepoint@princeton.edu">thepoint@princeton.edu</a>

Princeton University's **TigerTransit** shuttle system operates on a fixed route schedule, providing safe, convenient and reliable transportation throughout the Princeton campus and surrounding community. There are TigerTransit stops located at most major academic and administrative buildings, commuter parking lots, and housing facilities. The system is **free and open to the public**, except for late-night on-demand service and service from Princeton Junction, when passengers must present a valid University ID to board. All fleet vehicles are ADA accessible, and easily recognizable as part of the TigerTransit network with University branding or signage. Fleet vehicles have wheelchair capacity, accessibility features like a flip-out ramp and low floor kneeling, and front load racks for bicycles.

# HOW TO GET TO POPULAR DESTINATIONS

## USING BUS, TRAIN, AND COMMUNITY TRANSPORTATION OPTIONS

This section offers summary charts on bus and train services offered in each municipality. We've also included **routes or services** you can use to get to popular destinations like markets, shopping centers, hospitals, schools, and senior centers around Mercer County.



# TRANSPORTATION BY MUNICIPALITY

Below is a summary table of different transportation services available in each municipality in Mercer County.

<i>MUNICIPALITY</i>	<i>BUS SERVICE</i>	<i>TRAIN SERVICE</i>
East Windsor (Hightstown)	Rt. 130 Connection-East Windsor Shuttle-Coach/Suburban	
Ewing	NJTRANSIT 600, 601, 603, 607, 609, 619, 624	SEPTA West Trenton
Hamilton	NJTRANSIT 601, 603, 606, 607, 609, 613, 619 Rt. 130 Connection	NJTRANSIT Northeast Corridor
Hopewell (Pennington)	NJTRANSIT 624	
Lawrence	NJTRANSIT 603, 606, 609 MCCC Shuttle (WW Campus)	
Princeton	NJTRANSIT 605, 606, Tiger Transit, Coach/Suburban, Princeton Muni	Princeton Shuttle train (Dinky)
Robbinsville	NJTRANSIT 606, ZLine	
Trenton	NJTRANSIT 600, 601, 603, 606, 608, 609, 613, 619, 624, 409 – Rt. 130 Connection – SEPTA 127– MCCC Shuttle (WW Campus)	NJTRANSIT Northeast Corridor AMTRAK – Riverline – SEPTA
West Windsor	NJTRANSIT 600, 612, 619, East Windsor Shuttle – MCCC Shuttle – Private Shuttles NJTRANSIT 606, ZLine	NJTRANSIT Northeast Corridor AMTRAK – Princeton Shuttle train (Dinky)

# TRANSPORTATION BY POPULAR DESTINATION

Below is a summary table of different transportation services to popular destinations within Mercer County.

## ***Shopping*** \*Seasonal

Hamilton Square	NJTRANSIT 603 Rt. 130 Connection
Independence Plaza	NJTRANSIT 607
Market Fair	NJTRANSIT 600 & 605, Tiger Transit
Market Place	NJTRANSIT 601, 606, 613, Rt. 130 Connection
Nassau Park	NJTRANSIT 605, 609, 613
Palmer Square	NJTRANSIT 605, 606, & Tiger Transit Lines
Princeton Shopping Center	NJTRANSIT 605,606
Quaker Bridge Mall	NJTRANSIT 603, 605,609,612* & MCCC shuttles



## ***Farmers Markets*** \*Seasonal

Trenton Farmers Market	NJTRANSIT 606
West Windsor Community Farmers Market*	NJTRANSIT 600
Princeton Farmers Market*	NJTRANSIT 605,
Greenwood Avenue Farmers Market*	NJTRANSIT 603/613, 609



# TRANSPORTATION BY POPULAR DESTINATION

Below is a summary table of different transportation services to popular destinations within Mercer County.

## ***Colleges/Universities***

The College of NJ	NJTRANSIT 624
MCCC – Trenton	NJTRANSIT 600,601,603,606,607,608,609,613 & 409
MCCC – West Windsor	NJTRANSIT 619, Rt.130 Connection & MCCC shuttles
Princeton University	NJTRANSIT 605, 606, Dinky train, Coach/Suburban & Tiger Transit Lines
Rider University	NJTRANSIT 606, MCCC shuttle
Thomas Edison College	NJTRANSIT 600, 601,606,608, 609



## ***Senior Centers and Resource Centers***

East Windsor	Rt. 130 Connection
Ewing	NJTRANSIT 607
Hamilton	NJTRANSIT 619
Lawrence	NJTRANSIT 606
Princeton	NJTRANSIT 606
Trenton–Jennye W. Stubblefield	NJTRANSIT 601,609
Trenton–Reading	NJTRANSIT 603/613,607,624
Trenton–Samuel Naples	NJTRANSIT 601
Trenton–South Ward	NJTRANSIT 603/613
West Windsor	NJTRANSIT 612 (limited)





# TRANSPORTATION BY POPULAR DESTINATION

Below is a summary table of different transportation services to popular destinations within Mercer County.

## ***Health Facilities***

Capital Health (Hopewell)	TRADE, RideProvide, Hopewell Valley Rides
Capital Health (East Trenton)	NJTRANSIT 606, TRADE, RideProvide, AccessLink
Capital Health (Trenton)	NJTRANSIT 600, TRADE, RideProvide, Access Link
CHOP Specialty Care Center	NJTRANSIT 600, TRADE, RideProvide, Access Link
Penn Medicine at Princeton	NJTRANSIT 603, TRADE, RideProvide, Access Link
RWJ University Hospital – Hamilton	NJTRANSIT 609/619, TRADE, RideProvide, Access Link
St. Lawrence Rehabilitation Center Hsp.	NJTRANSIT 606, TRADE, RideProvide, Access Link
Trenton Psychiatric Hospital	NJTRANSIT 608, TRADE, Access Link



## ***Grocery Stores***

Acme – Trenton (Hamilton Square)	NJTRANSIT 606
Aldi – East Windsor	Rt. 130 Connection
Aldi – Hamilton	NJTRANSIT 603,606
Aldi – Trenton (Broad St.)	NJTRANSIT 603
Aldi – Trenton (N. Olden)	NJTRANSIT 601
Foley's Family Market	NJTRANSIT 603
McCaffrey's – Princeton	NJTRANSIT 605, 606
ShopRite – East Windsor	Rt. 130 Connection



# TRANSPORTATION BY POPULAR DESTINATION

Below is a summary table of different transportation services to popular destinations within Mercer County.

## ***Grocery Stores***

**ShopRite – Ewing**

NJTRANSIT 601

**ShopRite – Hamilton Market Place**

NJTRANSIT 601,603/613,606, Rt. 130 Connection

**ShopRite – Hamilton Square**

NJTRANSIT 603, Rt. 130 Connection

**ShopRite – Lawrence**

NJTRANSIT 600, 603/613

**ShopRite – Lawrenceville**

NJTRANSIT 603/613, 605

**ShopRite – Pennington**

NJTRANSIT 624

**ShopRite – Skillman**

NJTRANSIT 605



# TRANSPORTATION NETWORK COMPANIES AND TRANSIT APPS

## SMARTPHONE AND NON-SMARTPHONE OPTIONS

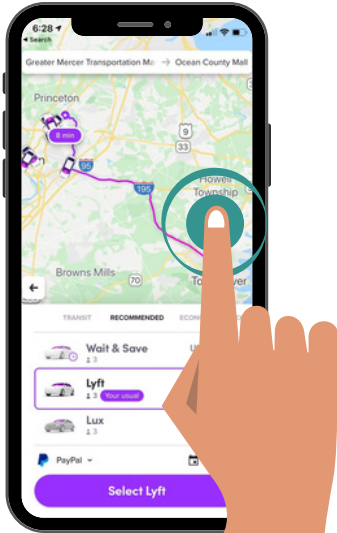
In this section, we cover different **private ride scheduling options**. Depending on your level of comfort with technology and smartphones, there are many ways to do it-- you can call ahead, use an app, or visit company websites to schedule rides. Whether you own a smartphone or not, soon you'll have the right tools and confidence to navigate through Mercer County on your own!



# TRANSPORTATION NETWORK COMPANIES (TNCs)



Transportation Network Companies (TNCs) like **Uber** and **Lyft** provide internet-based applications that allow you to order rides directly from your **smartphone** and pay for them automatically by registering a credit or debit card.



## How to request a ride on the app

1. First, turn on and allow **Location Services** on your phone.
2. Open and log into the Uber or Lyft app on your device
3. **Type your destination** into the "Where to?" section
4. Select the **type of vehicle** you would like at the bottom of the screen.
5. Tap "Request" and then confirm the pickup location
6. Wait for your request to be accepted by a driver and check the estimated time of arrival
7. Just wait for your driver to arrive. You can check their location on the in-app map. You will be notified when they are close to the pickup location

If you prefer non-smartphone methods, **please see the next page.**



# NO SMART PHONE REQUIRED



EZ Ride offers **on-demand transportation** for adults 18 years or older in partnership with transportation network companies (TNCs) like Lyft and Uber throughout New Jersey. **Ryde4Life** is a membership-based program. Riders fill up a registration form and establish a transportation account using a credit or debit card. Once that's setup, rides can be scheduled in real time. It's as easy to register, reserve, and ride.

**Cost:** \$15/year for membership + Ride fees by Lyft or Uber + \$2.50 administrative fee per ride

**Request a Ride:** Call 201-939-4242 Ext. 4 and speak to an EZ Ride Operator to request a ride. Rides are provided in real time with **no advance reservations**. Email [Ryde4Life@ezride.org](mailto:Ryde4Life@ezride.org) for more information.

#### Availability:

Monday through Friday, 8:00 AM–8:00 PM; Saturday and Sunday, 8:00 AM–5:00 PM

**Website:** <https://ezride.org/>

[Click here  
to learn  
more](#)



## GOGO GRANDPARENT

Go Go Grandparent provides transportation, groceries, home services & more for older adults. They have worked with hundreds of thousands of drivers and match clients with drivers that will meet their needs, especially riders living with visual, ambulatory, cognitive and dexterity impairments. Walkers and foldable wheelchairs are no problem, as long as the rider can make it into a car without assistance.

**Cost:** Monthly membership plans start at \$9.99 + Lyft or Uber Ride Fare + \$0.27/minute admin fee

**Request a Ride:** Register for free at [gogograndparent.com](http://gogograndparent.com) or call 1-855-464-6872 and press 2. Email the organization at [support@gogograndparent.com](mailto:support@gogograndparent.com)

**Availability:** Operators are available 24/7 to give quotes, schedule rides in advance and answer any questions that you have.

**Website:** <https://gogograndparent.com/>

[Click here  
to learn  
more](#)

# OTHER TRANSPORTATION WEBSITES AND APPS



NJ TRANSIT Mobile App



NJ TRANSIT Access Link  
Mobile App



Google Maps



NJ TRANSIT MyBus Website



NJ TRANSIT DepartureVision  
(Real time Departure Vision  
also available on the App).



Amtrak



# ACTIVE TRANSPORTATION: BIKING AND WALKING

## IN MERCER COUNTY



Walking and biking combine fun, fitness and transportation. When you have the opportunity to safely walk or bike to your destination, do it! This section offers safety tips and resources to help you get started and keep you moving.



# WALKING IN MERCER COUNTY

\* Walking is a healthy and simple way to get where you need to go— it can also save a lot of gas money! Get out and walk and when you do, remember these safety tips:



1

Use sidewalks and crosswalks, wherever possible. When sidewalks are unavailable, walk facing traffic. When crossing at mid-block without a crosswalk, you must yield to vehicles.

2

Obey traffic signs and signals. Cross only when the pedestrian light says it's safe to do so!

3

Always look before crossing. Be sure all lanes are clear. Before crossing, stand clear of visual obstacles like a parked car or bus that might prevent a driver from noticing you.

4

Be alert and avoid distractions. **Head up, Phones down!** Listen for engine noise or backing lights near parking spaces or lots.

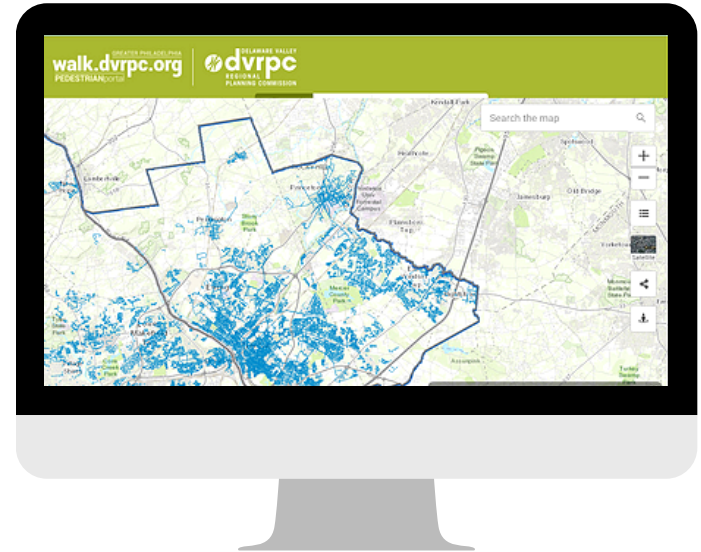
5

**If you can, walk with a buddy!**

# RESOURCES FOR WALKING IN MERCER COUNTY

- \* Check out where there are sidewalks and possibly gaps in sidewalks to help you plan your walk.

The Delaware Valley Regional Planning Commission (DVRPC) developed a Pedestrian Portal Explorer where users can explore the availability of sidewalks, crosswalks, and ramps in Mercer County. Visit [walk.dvrpc.org](http://walk.dvrpc.org) or [click here](#) to find the Sidewalk Inventory.



- \* Stay healthy, mobile, and confident with the Greater Mercer TMA's Pedestrian Safety Program.

GMTMA offers a free pedestrian safety program geared specifically to older adults at senior centers, senior housing and other community facilities.

# BIKING IN MERCER COUNTY

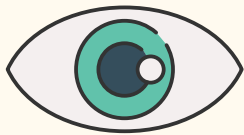


There are many reasons why you might opt to commute by bike in Mercer County. It is a fun, free, healthy, and environmentally friendly way to get around. When commuting by bike you:

- Lessen your impact on the environment. Biking has virtually no carbon footprint.
- Improve your health and reduce stress. Cycling counts towards your daily exercise!
- Save money. Gas (and wear and tear on your car) is expensive; pedal power is free.



Every person riding a bicycle on a roadway is granted all the rights and subject to all of the duties of the motor vehicle driver. Practice safe cycling habits on the road:



## Be Seen

A front white light and rear back light are essential and required.



## Be Heard

Let others know you're approaching. Bells are required.



## Be Right

Ride in the same direction as traffic, as far to the right as practicable.



## Be Headstrong

It's always smart to wear a helmet. Under 17 it's required.

# RESOURCES FOR BIKING IN MERCER COUNTY



Greater Mercer TMA provides bike safety education for schools, business and community organizations.

Contact us at **609-452-1491** and visit [gmtma.org/biking](https://gmtma.org/biking) for more maps, resources, and information.

*The following resources provide further information on bike regulations and trails in Mercer County*

## NJDOT Biking Regulations

[www.nj.gov/transportation/commuter/bike/regulations.shtm](https://www.nj.gov/transportation/commuter/bike/regulations.shtm)

## GMTMA's Trail Plan and interactive map

[gmtma.org/greater-mercer-trails-plan/](https://gmtma.org/greater-mercer-trails-plan/)

Learn about existing and proposed trails for biking and walking.

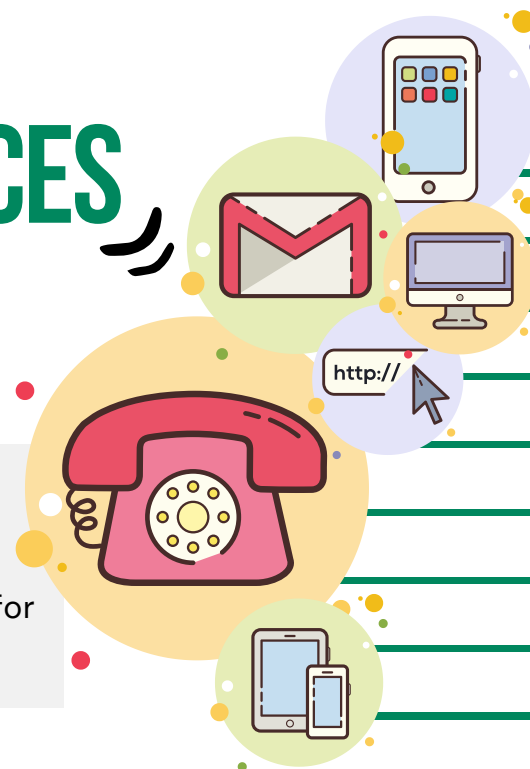
*There are also several Bicycle Advocacy and Cycling Groups in Mercer County.*

- **Trenton Cycling Revolution** [trentoncycling.org](https://trentoncycling.org)
- **West Windsor Bicycle & Pedestrian Alliance** [wwbpa.org](https://wwbpa.org)
- **Princeton Freewheelers** [princetonfreewheelers.com](https://princetonfreewheelers.com)

# CONTACT INFORMATION FOR TRANSPORTATION SERVICES

IN MERCER  
COUNTY

We hope this guide helps you get around Mercer County, whichever way you choose. We've compiled a list of resources like **phone numbers, websites, and e-mail addresses** in case you need to ask for assistance or more information. Safe and happy travels!





## BUS & TRAIN CONTACT INFORMATION

### Greater Mercer TMA

Call **609-452-1491** for assistance

[gmtma.org](http://gmtma.org)

### NJ TRANSIT

For schedules, call **973-275-5555**  
or text **800-772- 2287**

[njtransit.com](http://njtransit.com)

### NJ TRANSIT Access Link

Call **973-491-4224**

[accesslink.njtransit.com](http://accesslink.njtransit.com)

### ZLine and ZLine2, Route 130 Connection

Call Greater Mercer TMA at **609-452-1491**

[gmtma.org](http://gmtma.org)

### SEPTA

215-580-7800

[septa.org](http://septa.org)

### Amtrak

1-800-USA-RAIL (872-7245)

[amtrak.com](http://amtrak.com)

### Middlesex County Area Transit (MCAT)

Phone 732-745-7456  
Reservations 800-221-3520

[middlesexcountynj.gov](http://middlesexcountynj.gov)

## COMMUNITY TRANSPORTATION CONTACT INFORMATION

### Mercer County Community College (MCCC) Shuttle

West Windsor Campus: 609-570-3740  
Trenton Campus: 609-570-3161

[mccc.edu/student\\_services\\_shuttle.shtml](http://mccc.edu/student_services_shuttle.shtml)

### Princeton TigerTransit

609-258-8300  
[thepoint@princeton.edu](mailto:thepoint@princeton.edu)

[transportation.princeton.edu](http://transportation.princeton.edu)

## COMMUNITY TRANSPORTATION CONTACT INFORMATION

### **Mercer County T.R.A.D.E.**

609-530-1971; 609-275-2929 for  
Princeton/Hightstown rides

[trade@mercercounty.org](mailto:trade@mercercounty.org)

### **RideProvide**

609-452-5144  
Information and Reservations

[rideprovide.org](http://rideprovide.org)  
[info@rideprovide.org](mailto:info@rideprovide.org)

### **Crosstown**

609-751-9699 to register  
609-452-5144 to schedule rides

[princetonsenior.org/crosstown-transportation/](http://princetonsenior.org/crosstown-transportation/)

### **Hopewell Valley Rides**

609-537-0236 to register  
609-452-5144 to schedule rides

[hopewelltpw.org](http://hopewelltpw.org)

### **Modivcare (Medicaid)**

1-866-527-9933

[modivcare.com](http://modivcare.com)

## SPECIAL TRANSPORTATION INFORMATION

### **Go Go Grandparent**

Call 1-855-464 - 6872

[gogograndparent.com/](http://gogograndparent.com/)  
[support@gogograndparent.com](mailto:support@gogograndparent.com)

### **EZ Ride-Ryde4Life**

Call 201-939-4242 Ext. 4  
Or 1-866-208-1307, Option 4

[ezride.org](http://ezride.org)  
[Ryde4Life@ezride.org](mailto:Ryde4Life@ezride.org)

# SENIOR CENTER CONTACT INFORMATION

<u><b>East Windsor</b></u>	609-371-7192	<a href="http://east-windsor.nj.us/">east-windsor.nj.us/</a>
<u><b>Ewing Township</b></u>	609-883-1776 ext. 6205	<a href="http://ewingnj.org/resident/seniors">ewingnj.org/resident/seniors</a>
<u><b>Hamilton</b></u>	609-890-3686	<a href="http://hamiltonnj.com/Seniors">hamiltonnj.com/Seniors</a>
<u><b>Lawrence</b></u>	609-844-7048	<a href="http://lawrencetwp.com">lawrencetwp.com</a>
<u><b>Mercer County</b></u>	609-989-6661	<a href="http://mercercounty.org">mercercounty.org</a>
<u><b>Trenton</b></u>	609-989-3336	<a href="http://trentonnj.org">trentonnj.org</a>



**NJ TRANSIT  
Mobile App**



**NJ TRANSIT Access Link  
Mobile App**



**NJ TRANSIT MyBus  
Website**



**NJ TRANSIT DepartureVision**  
(Real time Departure Vision also available  
on the App)



**Google Maps**



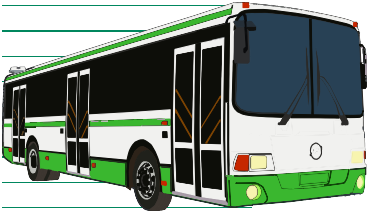
**Uber Website**



**Lyft Website**



**Amtrak**



# INTERESTED IN OUR TRAVEL TRAINING PROGRAM?

Travel training teaches people how to safely and independently travel on the bus, rail, light rail, and the other transportation services covered in this guide. Trainings are conducted by Greater Mercer TMA, frequently partnering with the **New Jersey Travel Independence Program** (NJ TIP @ Rutgers)

Riders learn how to plan their trips, read schedules, pay fares, use accessibility features and take safety precautions during their travel. Classes are typically conducted as small group trainings. Learn more about Greater Mercer TMA's program **here** or by visiting the website at **www.gmtma.org**.



This publication was prepared with funding from the North Jersey Transportation Planning Authority (NJTPA) and the Federal Highway Administration (FHWA). This document is disseminated under the sponsorship of NJTPA and FHWA in the interest of information exchange. NJTPA and FHWA assume no liability for its contents or use thereof.