

HOW TO RIDE THE BUS

IN MERCER
COUNTY



There are several options for getting around by bus in Mercer County. This section will cover available routes, fares, and timetables.



*NJ
TRANSIT*



NJ TRANSIT operates New Jersey's public transportation system.

Its mission is to provide safe, reliable, convenient and cost-effective mass transit service. Its bus and rail system also serves portions of New York State and Pennsylvania.

PLANNING YOUR TRIP

STEP 1: FIND A BUS ROUTE

NJ TRANSIT has a number of bus lines that serve Mercer County. To get going, you should check online for bus options in your community. The NJ TRANSIT **Trip Planner** can also help you figure out which route to take. You may reach out to their customer service at **973-275-5555** for assistance or call Greater Mercer TMA, your local transportation management association, at **609-452-1491** if you have any questions.



STEP 2: CHECK THE TIMETABLE

Once you find the bus line that will get you where you need to go, download the route schedule online. Timetables can be obtained **online at NJ TRANSIT** or at most major bus and rail terminals. See the next page for instructions on how to read a timetable.

If you're on-the-go, you can also check bus schedules by calling **973-275-5555** or referring to **MyBus** for real-time bus arrivals at bus stops. Skip ahead for a step-by-step tutorial.



TIMETABLES

Reading a timetable is easy! See the next page for an example of a time table and use the instructions below to practice.

- 01 Choose your **direction of travel** and choose the weekday (Monday–Friday) or weekend (Saturday, Sunday and holidays) section of the schedule.
- 02 Find the **location that you want to start from** on the timetable. Not all bus stops are listed on the timetable. The time points listed represent major stops on the bus route. The bus will also stop at locations along the route that are between the time points as long as it is safe to pull over. If your stop is between two time points, use the earlier time as your guide.
- 03 Select the **time that you want to start your trip** and read across the timetable to your destination to see the arrival time. If there is a letter listed to the left of the times listed for the trip that you plan to take, look for the explanation under or near the schedule block.



NJ TRANSIT MYBUS

NJ TRANSIT provides a real-time service information system for bus customers. The service, **mybus**, provides access to real-time bus location and arrival information. Customers can obtain their **bus stop ID** online at njtransit.com or from mybus signs posted at bus stops statewide. Follow these easy steps to obtain information about your bus stop:

01

Locate the mybus sign above the NJ TRANSIT bus stop sign.

02

Identify the bus stop number.

03

Call **973-275-5555** or text your bus stop number to mybus (**69287**). You will be provided with the time of the next bus scheduled to arrive at your stop



FARES



NJ TRANSIT fares operate on a zone system. **Your fare is based on the number of zones that you travel through.** Check the map on the schedule to see how many zones you travel through. You also can check fares by going to [Bus Point-to-Point Planner](#) and entering your travel information.

If you are beginning your trip on the River LINE and transferring to a bus, purchase one zone with a transfer ticket from the Ticket Vending Machine before boarding the River LINE.

ZONE	1	2	3	4	TRANSFER
REDUCED FARE	\$0.75	\$1.00	\$1.25	\$1.50	\$0.30
FULL FARE	\$1.60	\$2.25	\$2.75	\$3.35	\$0.70
MONTHLY PASS	\$54.00	\$71.00	\$83.00	\$90.00	N/A

Transfer must be purchased when boarding initial bus

NJ TRANSIT Reduced Fare Program

Individuals age **62 and older** save **50% or more** on NJ TRANSIT tickets and passes. You can use cash to pay for these tickets and passes. You may be asked to show the driver an ID with proof of your age. Any ID with your date of birth and issued by a government, social service or mass transit agency is acceptable. You can also obtain a NJ TRANSIT Reduced Fare Card by calling NJ TRANSIT at **973-491-7112**.

FARES

Once you've determined what route you want to take and how much your trip will cost, there are several ways to pay for the fares. If you're thinking about taking a single trip or purchasing a multi-trip bus pass, check the options below to see which one is most appropriate for you.

Pay the fare when you board.

Tell the driver your destination so he or she can confirm your fare. All Mercer County buses (except the 409/418) **require exact change to pay the fare.** Drivers cannot make change. One dollar bills and coins are accepted. Cash and coins are inserted into a fare box.

Buy a pass for your regular commute.

Bus passes are available at most major terminals and at local outlets throughout New Jersey. At NJ TRANSIT ticket offices and Ticket Vending Machines, monthly and FlexPass bus passes are available for purchase beginning at 5 p.m. on the 19th of the previous month through the 10th of the month for which the pass is valid.

Ticket Agents

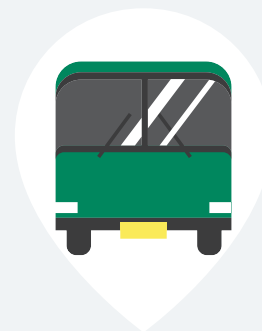
Commissioned Ticket Agents (CTA) are private retail businesses that sell NJ TRANSIT bus tickets or passes on the agency's behalf. In Mercer County, there is one CTA office in Trenton where you can buy one way, monthly, and 10-trip passes.

Fuji Newsstand 2 North Broad Street, Trenton, NJ
Call **609-393-1115** for more info.

TIPS FOR FLAGGING THE BUS

- 01 Wait for your bus at a designated bus stop where you see a bus stop sign or at a location where you have been told by a NJ TRANSIT representative to wait. Check the **bus stop sign** to make sure that your bus stops there.
- 02 Arrive at your stop at least **5 mins. earlier** than the scheduled bus departure time.
- 03 When you see the bus approaching, **raise your arm and wave your hand** to the bus driver as a signal that you would like to board the bus.
- 04 Check the **destination sign** on the bus before boarding. Some buses have multiple destinations. If you are unsure, ask the driver. They will be glad to assist you.

When the bus arrives at the stop, **board carefully and use the handrails** if needed to assist you as you step on the bus.



All NJ TRANSIT buses can kneel (lowering the distance to the first step) making it easier to board the bus. If you need the bus to kneel to climb aboard, do not hesitate to ask the driver for this service. All NJ Transit routes are also operated with **lift-equipped buses**.

TRANSFERS

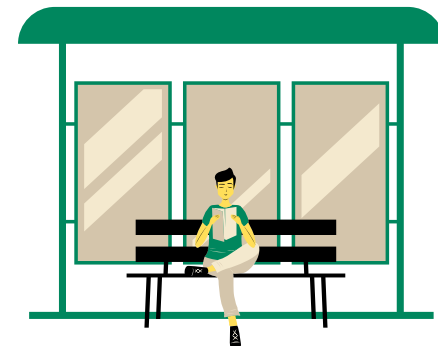
Sometimes it is necessary to transfer to another bus or light rail line to reach your destination. For these times, you need to purchase a transfer. Using a transfer saves money and is less expensive than paying the fare without a transfer on the second bus.

How much is a Transfer?

Transfers are purchased from the bus operator when you are paying for your fare. Transfers for full fares cost \$.70 and \$.30 for reduced fares.

How long do Transfers work?

The transfers are valid for two hours after your purchase. The transfers are valid for using a second bus or the NJ TRANSIT River LINE for a one zone ride. If travel on the second bus is greater than one zone, there will be an additional charge.



If you are beginning your trip on the River LINE and transferring to a bus, **purchase one zone with a transfer ticket** from the Ticket Vending Machine before boarding the River LINE.

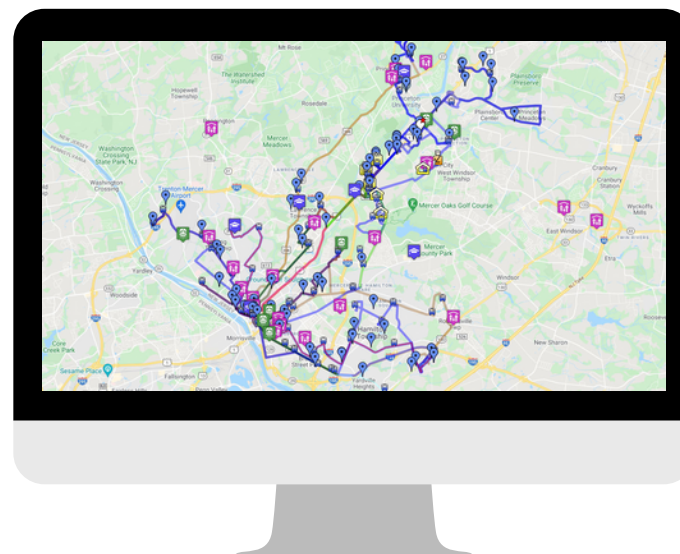


NJ TRANSIT ROUTES



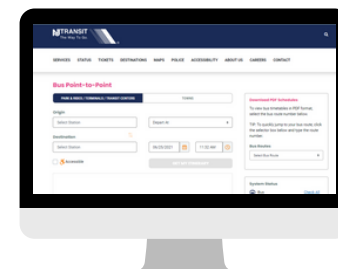
NJ TRANSIT operates an extensive bus network of intra and interstate routes throughout New Jersey and into New York and Philadelphia. There are many local routes, 600, 601, 603, 605, 606, 607, 608, 609, 611, 612, 613, 619, and 624 within Mercer County. Service to Philadelphia is also provided on the 409/418. Find the route that's right for you and get on board.

See the next page for information on routes in Mercer County and where to find service schedules and timetables. To view NJ TRANSIT's Mercer County Bus Routes on our interactive map, **[click here](https://gmtma.org/interactive-map/)** or visit gmtma.org/interactive-map/



NJ TRANSIT ROUTES

Click on the route numbers below to view NJ TRANSIT Timetables. You may also view and download PDF versions from the [NJ TRANSIT website](https://www.njtransit.com).



Route	Terminus #1	Terminus #2
<u>600</u>	Trenton Transit Center	Plainsboro
<u>601</u>	The College of New Jersey	Hamilton Marketplace
<u>603</u>	Mercer Mall	Hamilton Square
<u>605</u>	Quaker Bridge Mall	Montgomery Twp.
<u>606</u>	Princeton	Hamilton Marketplace
<u>607</u>	Ewing	Hamilton Ind. Plaza
<u>608</u>	Ewing	Hamilton Station
<u>609</u>	Ewing	Quaker Bridge Mall
<u>612</u>	Princeton Junc. Rail Station	Lawrence Twp. Loop
<u>613</u>	Mercer Mall	Hamilton Marketplace
<u>619</u>	Ewing	Mercer Community College
<u>624</u>	Pennington	East Trenton
<u>409</u>	Philadelphia	Trenton Transit Center
<u>418</u>	Camden	Trenton Transit Center