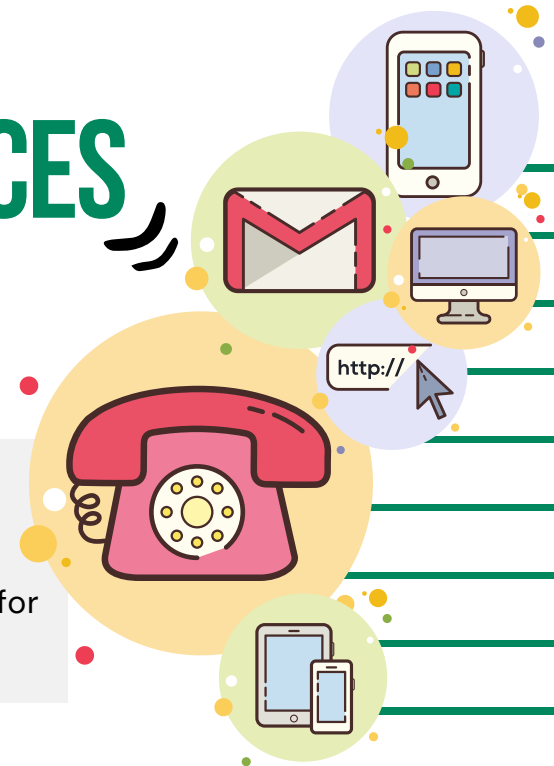


CONTACT INFORMATION FOR TRANSPORTATION SERVICES

IN MERCER
COUNTY



We hope this guide helps you get around Mercer County, whichever way you choose. We've compiled a list of resources like **phone numbers, websites, and e-mail addresses** in case you need to ask for assistance or more information. Safe and happy travels!



BUS & TRAIN CONTACT INFORMATION

Greater Mercer TMA

Call **609-452-1491** for assistance

gmtma.org

NJ TRANSIT

For schedules, call **973-275-5555**
or text **800-772- 2287**

njtransit.com

NJ TRANSIT Access Link

Call **973-491-4224**

accesslink.njtransit.com

**ZLine and ZLine2,
Route 130 Connection**

Call Greater Mercer TMA at **609-452-1491**

gmtma.org

SEPTA

215-580-7800

septa.org

Amtrak

1-800-USA-RAIL (872-7245)

amtrak.com

**Middlesex County
Area Transit (MCAT)**

Phone 732-745-7456
Reservations 800-221-3520

middlesexcountynj.gov

COMMUNITY TRANSPORTATION CONTACT INFORMATION

**Mercer County Community
College (MCCC) Shuttle**

West Windsor Campus: 609-570-3740
Trenton Campus: 609-570-3161

mccc.edu/student_services_shuttle.shtml

Princeton TigerTransit

609-258-8300
thepoint@princeton.edu

transportation.princeton.edu

COMMUNITY TRANSPORTATION CONTACT INFORMATION

Mercer County T.R.A.D.E.

609-530-1971; 609-275-2929 for
Princeton/Hightstown rides

trade@mercercounty.org

RideProvide

609-452-5144
Information and Reservations

rideprovide.org
info@rideprovide.org

Crosstown

609-751-9699 to register
609-452-5144 to schedule rides

princetonsenior.org/crosstown-
transportation/

Hopewell Valley Rides

609-537-0236 to register
609-452-5144 to schedule rides

hopewelltp.org

Modivcare (Medicaid)

1-866-527-9933

modivcare.com

SPECIAL TRANSPORTATION INFORMATION

Go Go Grandparent

Call 1-855-464 - 6872

gogograndparent.com/
support@gogograndparent.com

EZ Ride-Ryde4Life

Call 201-939-4242 Ext. 4
Or 1-866-208-1307, Option 4

ezride.org
Ryde4Life@ezride.org

SENIOR CENTER CONTACT INFORMATION

<u>East Windsor</u>	609-371-7192	east-windsor.nj.us/
<u>Ewing Township</u>	609-883-1776 ext. 6205	ewingnj.org/resident/seniors
<u>Hamilton</u>	609-890-3686	hamiltonnj.com/Seniors
<u>Lawrence</u>	609-844-7048	lawrencetwp.com
<u>Mercer County</u>	609-989-6661	mercercounty.org
<u>Trenton</u>	609-989-3336	trentonnj.org



**NJ TRANSIT
Mobile App**



**NJ TRANSIT Access Link
Mobile App**



**NJ TRANSIT MyBus
Website**



NJ TRANSIT DepartureVision
(Real time Departure Vision also available on the App)



Google Maps



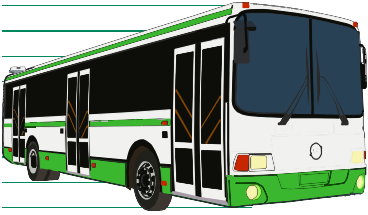
Uber Website



Lyft Website



Amtrak



INTERESTED IN OUR TRAVEL TRAINING PROGRAM?

Travel training teaches people how to safely and independently travel on the bus, rail, light rail, and the other transportation services covered in this guide. Trainings are conducted by Greater Mercer TMA, frequently partnering with the **New Jersey Travel Independence Program** (NJTIP @ Rutgers)

Riders learn how to plan their trips, read schedules, pay fares, use accessibility features and take safety precautions during their travel. Classes are typically conducted as small group trainings. Learn more about Greater Mercer TMA's program **here** or by visiting the website at **www.gmtma.org**.



This publication was prepared with funding from the North Jersey Transportation Planning Authority (NJTPA) and the Federal Highway Administration (FHWA). This document is disseminated under the sponsorship of NJTPA and FHWA in the interest of information exchange. NJTPA and FHWA assume no liability for its contents or use thereof.